

FIORANESE
CERAMICA



20
Cementine

CEMENTINE 20

Designed by *Silvia Stanzani*

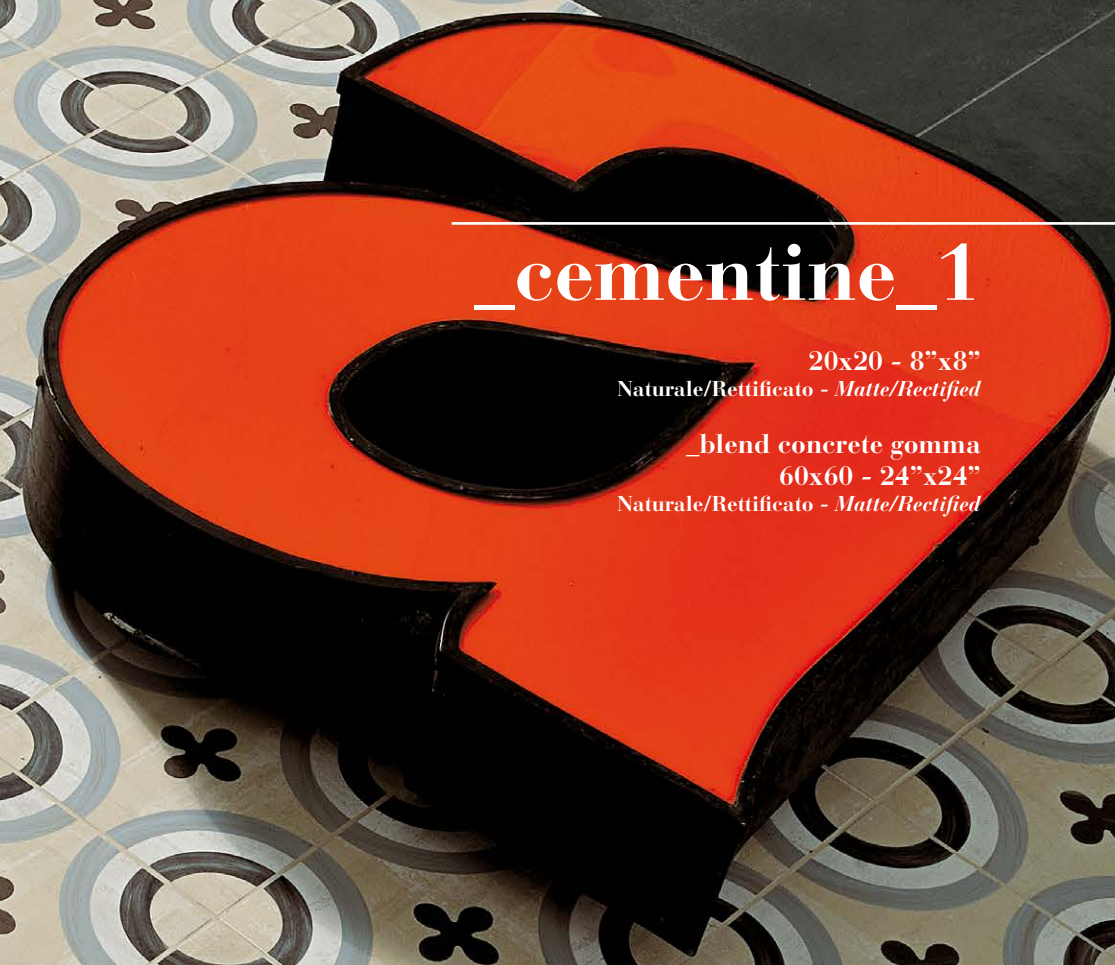




_cemente_1

20x20 - 8"x8"
Naturale/Rettificato - Matte/Rectified

_blend concrete gomma
60x60 - 24"x24"
Naturale/Rettificato - Matte/Rectified





_colors

20x20 - 8"x8"
Naturale/Rettificato - *Matte/Rectified*



_cementine20

_cementine_2
_blend concrete avorio
20x20 - 8"x8"
Naturale/Rettificato - Matte/Rectified



_cemente_3

_cemente_3
_blend concrete grigio
20x20 - 8"x8"
Naturale/Rettificato - Matte/Rectified



_cimentine20

cimentine 4
cimentine 5
20x20 - 8"x8"

Naturale/Rettificato - Matte/Rectified



CEMENTINE 20

_gres porcellanato
body-color

Designed by *Silvia Stanzani*



_colors



20x20 - 8"x8"
Naturale/Rettificato - Matte/Rectified

_abbinamenti consigliati

_recommended matchings

_avorio



_sabbia



_senape



_oliva



_grigio



_gomma



_blend concrete

_cementine_1



_cementine_2



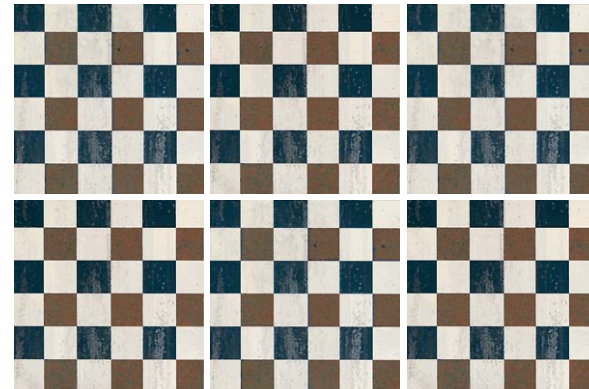
_cementine_3



_cementine_4



_cementine_5





_20x20

_confezionamento
_packaging

Formato Size Format Format Формат	Codice Code Artikelnummer Code Код	Articolo Item Artikel Article Товар	Scatole			Pallet			SPESSORE Thickness Stärke Épaisseur Толщина
			PZ/SC Pcs/Box Stck/Ktn Pcs/Boîte Шт/кор	MQ/SC Sqm/Box Qm/Ktn M²/Boîte Кв.м/кор	KG/SC Kg/Box Kg/Ktn Kg/Boîte Кг/Кор	COLLI Boxes Kartons Boîtes Коробки	MQ Sqm Qm M² Кв.М	KG Kg Kg Kg Кг	

NATURALE/RETTIFICATO - MATTE/RECTIFIED - MATT/REKTIFIZIERT - MATT/RECTIFIEE - НАТУРАЛЬНЫЙ/РЕКТИФИЦИРОВАННЫЙ

 20x20 - 8"x8"	IND20C1 IND20C2 IND20C3 IND20C4 IND20C5	Cementina_1 Cementina_2 Cementina_3 Cementina_4 Cementina_5	27	1,08	22	68	73,44	1506	10 mm
 20x20 - 8"x8"* 9 soggetti assortiti	IND20R	Colors	27	1,08	22	68	73,44	1506	10 mm

* Non è garantito un numero minimo di soggetti differenti all'interno di una scatola. - Minimum number of assorted patterns in each box not guaranteed.
 Eine Mindestanzahl von unterschiedlichen Subjekten in einer Schachtel kann nicht garantiert werden. - Une quantité minimum de sujets différents dans une même boîte ne peut être garantie. - В упаковке не гарантировано минимальное количество различных сюжетов.

CEMENTINE 20

_informazioni tecniche

_technical informations

**V1**

Soggetto unico

**V4**

Mix

R9**BCRA**Dry: > 0,40
Wet: > 0,40**PEI 4****DCOF**

Wet: 0.67

EN 14411:2012 Annex C Group BIa GL

**Pavimento**
Floor coverings - Bodenbeläge
Sol - Напольная**Rivestimento**
Wall coverings - Wandbeläge
Faïence - Настенная**Residenziale**
Residential areas - Wohngebiete
Zones résidentielles - Жилые помещения**Esterno**
Outdoor areas - Außenbereiche
Espaces extérieurs - Внешние помещения**Traffico leggero**
Light traffic areas - Geringe Begehungsfrequenz
Zones à trafic léger - Область с низким трафиком**Traffico pesante**
Heavy traffic areas - Starke Begehungsfrequenz
Zones à trafic intense - Область с высоким трафиком**Zone limitrofe a piscina**
Swimming pool areas - Schwimmbadbereich
Abords de piscines - Бассейны**Rivestimenti esterni / Pareti ventilate**
External cladding / Ventilated facade - Außenverkleidung / Hinterlüftete Fassaden
Murs extérieurs / Façades ventilées - Внешняя оболочка / Вентилируемые Стены**FIO.eco**
RECYCLING**Elevato contenuto di materiale riciclato**
High content of recycled material
Hoher Anteil an Recycelten Rohstoffen
Haute teneur en matériaux recyclés
Высокое содержание переработанных материалов**Materiale ottenuto anche con il recupero delle acque e dei materiali di scarto del ciclo produttivo.**
Product obtained also through the recovery of water and waste from the production cycle.
Produkttypologien die unter anderem durch die Wiedergewinnung von Abwässern und Ausschussmaterial des Produktionszyklus erhalten werden.
Produit fabriqué aussi avec les eaux recyclées et les rebuts du cycle de production.
Изделие полученных при оборотном использовании воды и отбракованных в процессе производственного цикла материалов.41042 Fiorano Modenese (MO) Italy
Via Cameazzo, 25 - Tel. (+39) 0536.99.35.11
Fax Italia 0536.99.35.56 - Fax Export (+39) 0536.83.26.11
Ragione Sociale: COEM S.p.A.
Sede Legale: 41042 Fiorano Modenese (MO) Italy - Via Cameazzo, 25.

FIORANESE

CERAMICA

www.fioranese.it - info@fioranese.it